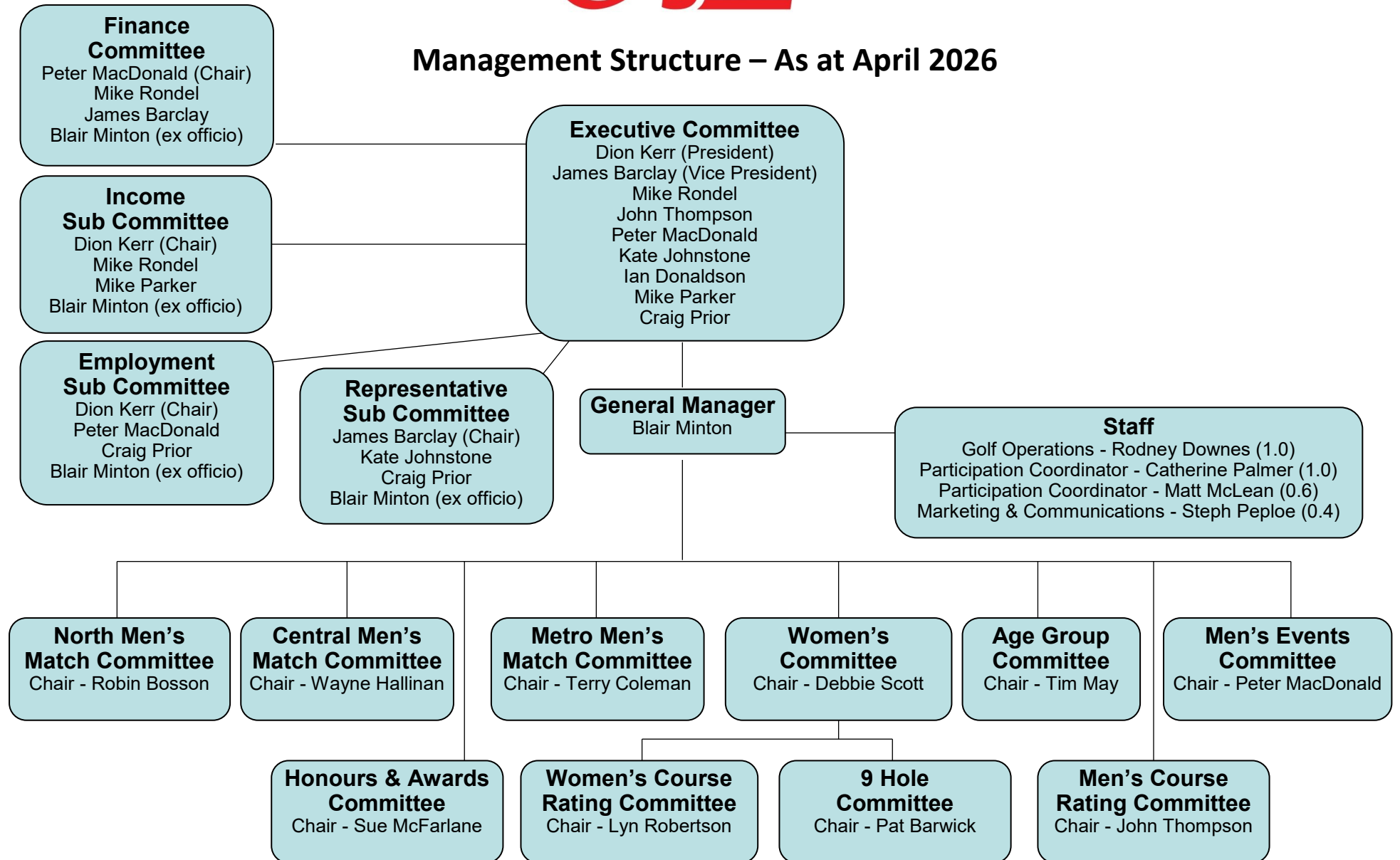


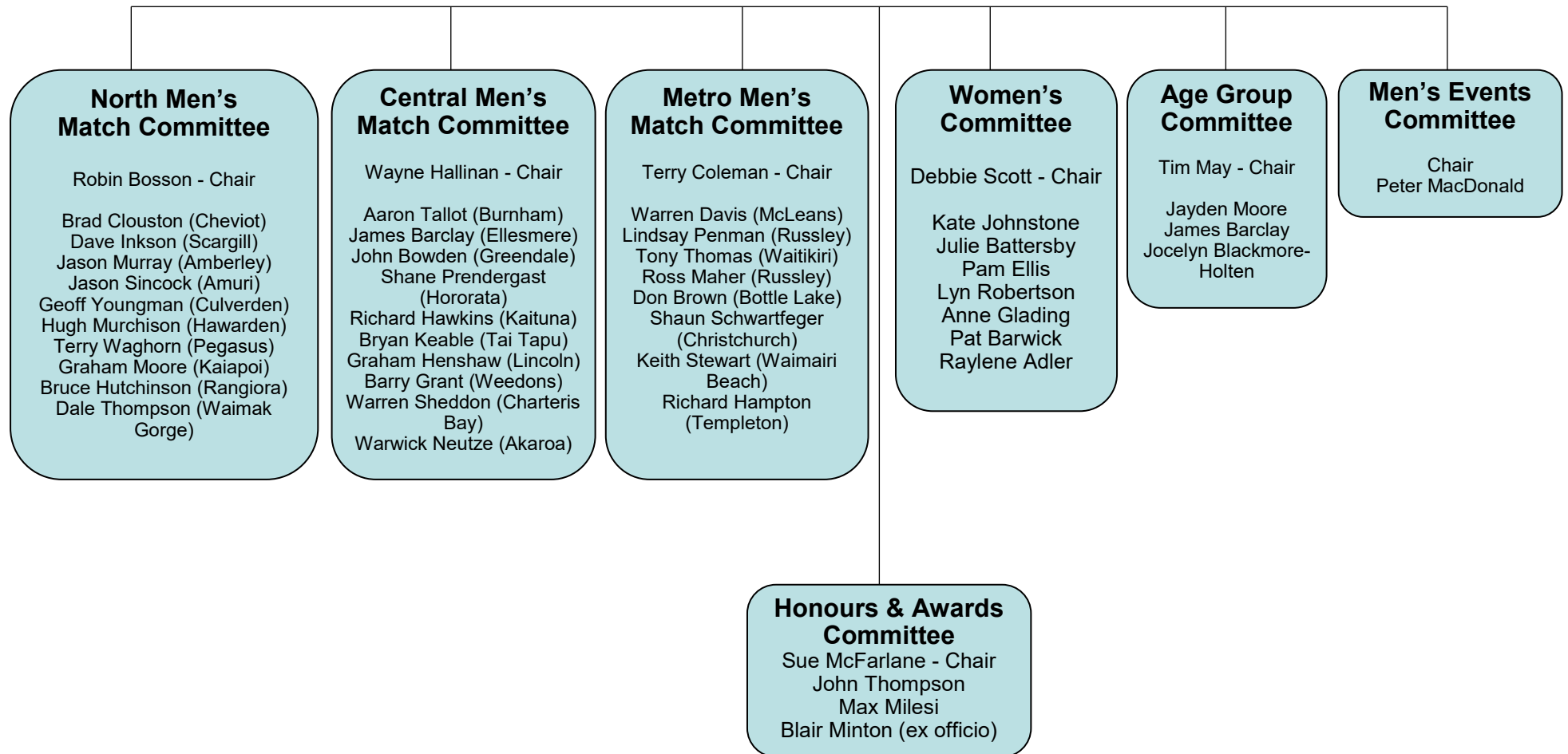


Management Structure – As at April 2026





Sub Committee members – September 2025





Roles of Sub Committees

Executive Sub-Committees

Finance—To manage, discuss, and make decisions regarding financial based topics for Canterbury Golf. Provides financial updates at each executive meeting.

Income— To manage, discuss, and make decisions regarding any existing or potential new income opportunities for Canterbury Golf. Provides income updates at each executive meeting.

Employment— To manage, discuss, and make decisions regarding any Canterbury Golf Employment processes.

Representative Committee— Provide an overview of the Canterbury Representative area for the Canterbury Golf Executive. Assist/supervise the appointment of Canterbury Representative selectors and team managers. Assist/supervise in Representative team season review processes. To at times support and provide their views to the GM around Representative related topics. Assistance with establishing annual Rep budget and compliance with this. Prepare report for CGI Annual Report.

Other Volunteer Committees

Women's, North, Central and Metro Match Committees— (a) To arrange, control and manage all games, matches, competitions, tournaments and representative fixtures played under the area of their jurisdiction and to make, repeal and amend rules for the regulation and control of these, including the setting up or amending of the conditions of play; (b) to arrange, control and manage the selection of any representative teams from their area of jurisdiction and to appoint personnel to assist these teams; (c) to provide reports to the Executive Committee of their meetings and decisions and to seek ratification of their decisions.

Men's Event Committee— Implement decisions, polices, programmes, and competitions/tournaments delivered by Canterbury Golf.

Age Group Committee— Assist Canterbury Golf with decisions and implementation of junior focused polices, programmes, and competitions/tournaments delivered by Canterbury Golf. Provide reports to the Executive Committee of their meetings and decisions.

Honors and Awards committee—To assess potential service awards candidates and nominations and approve the awarding of such awards as per the approved Canterbury Golf Service Awards Criteria.

Course rating Committees— Prepare annual course rating schedule (Men & Women.) Carry out all course rating for Canterbury Golf Clubs. Answer technical queries from clubs and CGI as required. Prepare report for CGI Annual report.